

Lotterywest grant making

Thank you for joining us



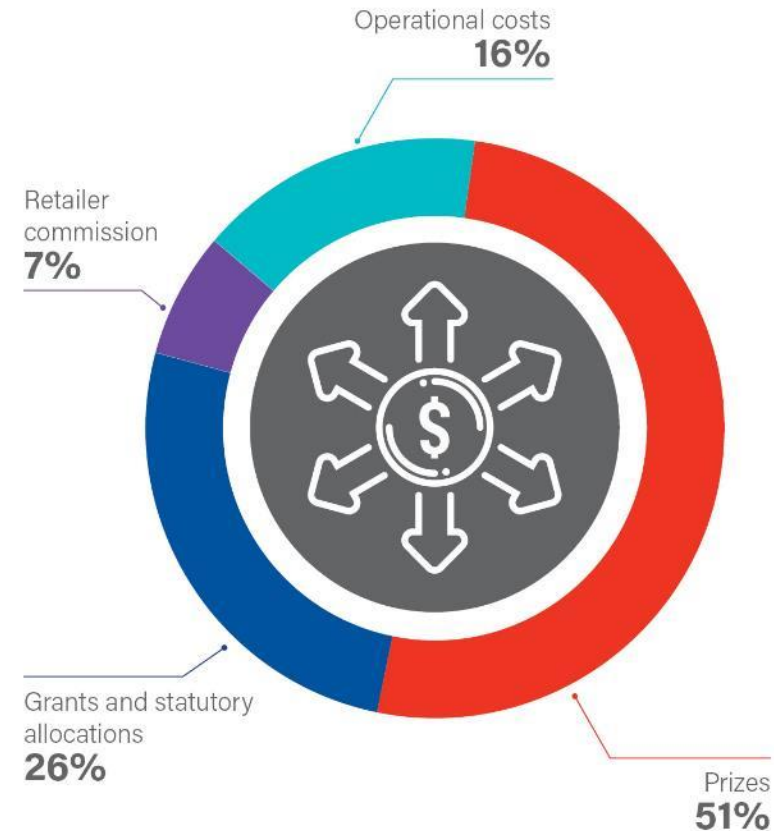
Who we are

- Established in 1932 during the Great Depression to regulate the lottery and support WA charities
- Only State-owned lottery in Australia where all the profits are returned to the community through prizes or grants
- All grants are recommended by the Lotterywest Board and approved by the Minister for Lotterywest



Where does the money go?

2020-21



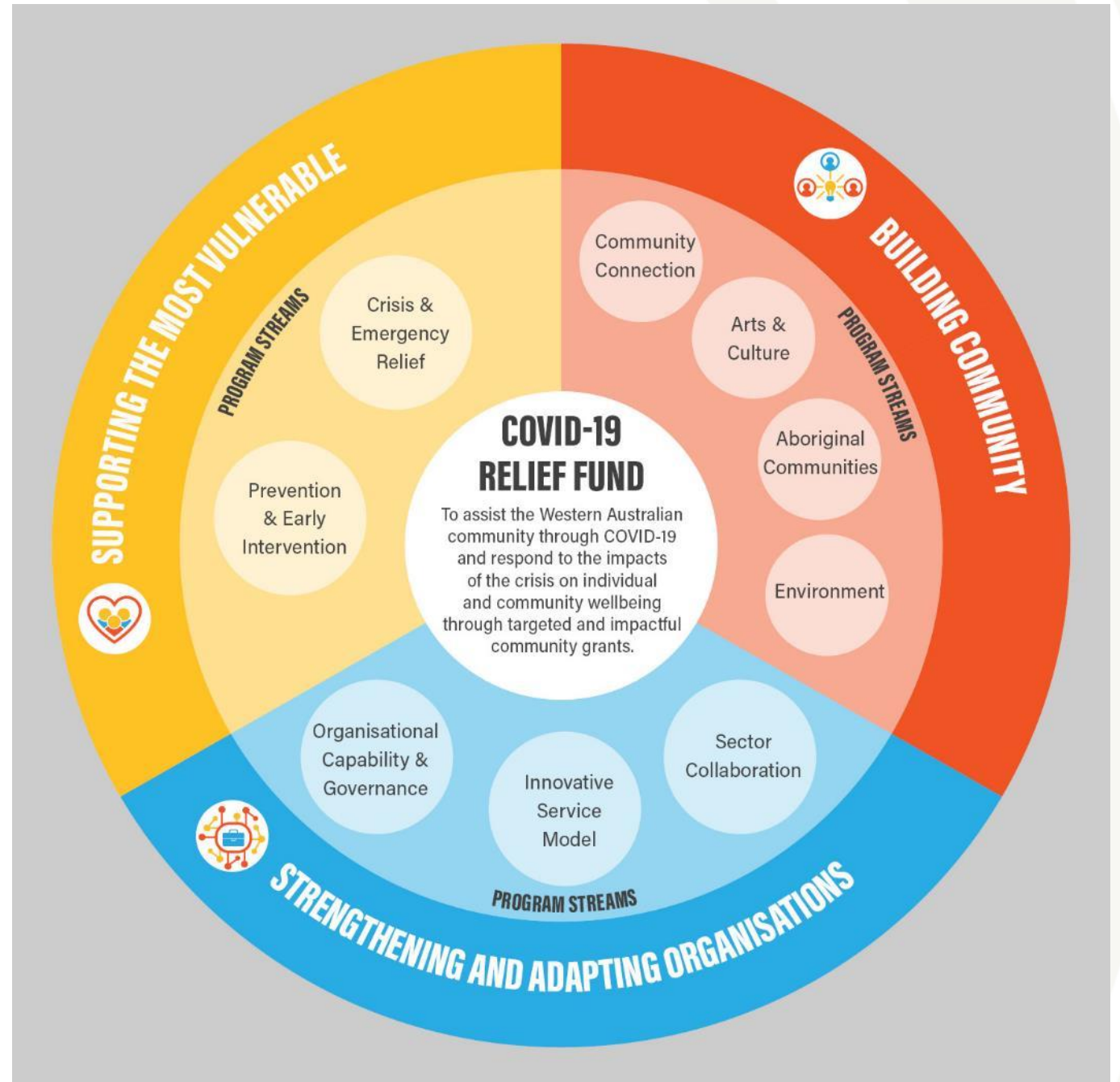
Based on cash flow

Figures are preliminary until audited and include write backs

COVID-19 Relief Fund

- We responded quickly to the needs of the WA community at the start of the pandemic
- Focused on supporting the most vulnerable, building community and strengthening and adapting organisations
- \$159 million distributed under the Fund between March 2020 and June 2021

Applications have now closed



Lotterywest and Healthway

- Brought together in 2018 to build on synergies and enhance benefits to the WA community
- Still operate as separate legal entities under their own legislation
- Working together under a common CEO, Board Chairperson & Board members



Margaret River Hockey Club
Image: DLGSC – Sport and Recreation
Kidsport

Thinking about applying for a grant?

Everything you need to know
about who and what we can
support



Diwali, 2018

Image credit: Saraswati Mahavidyalaya Institute Inc

Who can we support?

Your organisation is eligible to apply if it's a

- **Local Government Authority**
- **Not-for-profit** (i.e. none of the profits go to owners or shareholders)
 - If your organisation is registered as a charity with the ACNC or as an Incorporated Association in WA, you are eligible to apply (although there are a few extra checks for Trusts)
 - We'll need to check the not-for-profit status of other organisations individually

You may choose to be **auspiced** by an eligible organisation if you are a smaller not-for-profit. More details about how this will work will be available soon. (sometimes this occurs between a Men's Shed and Local Government Authority)

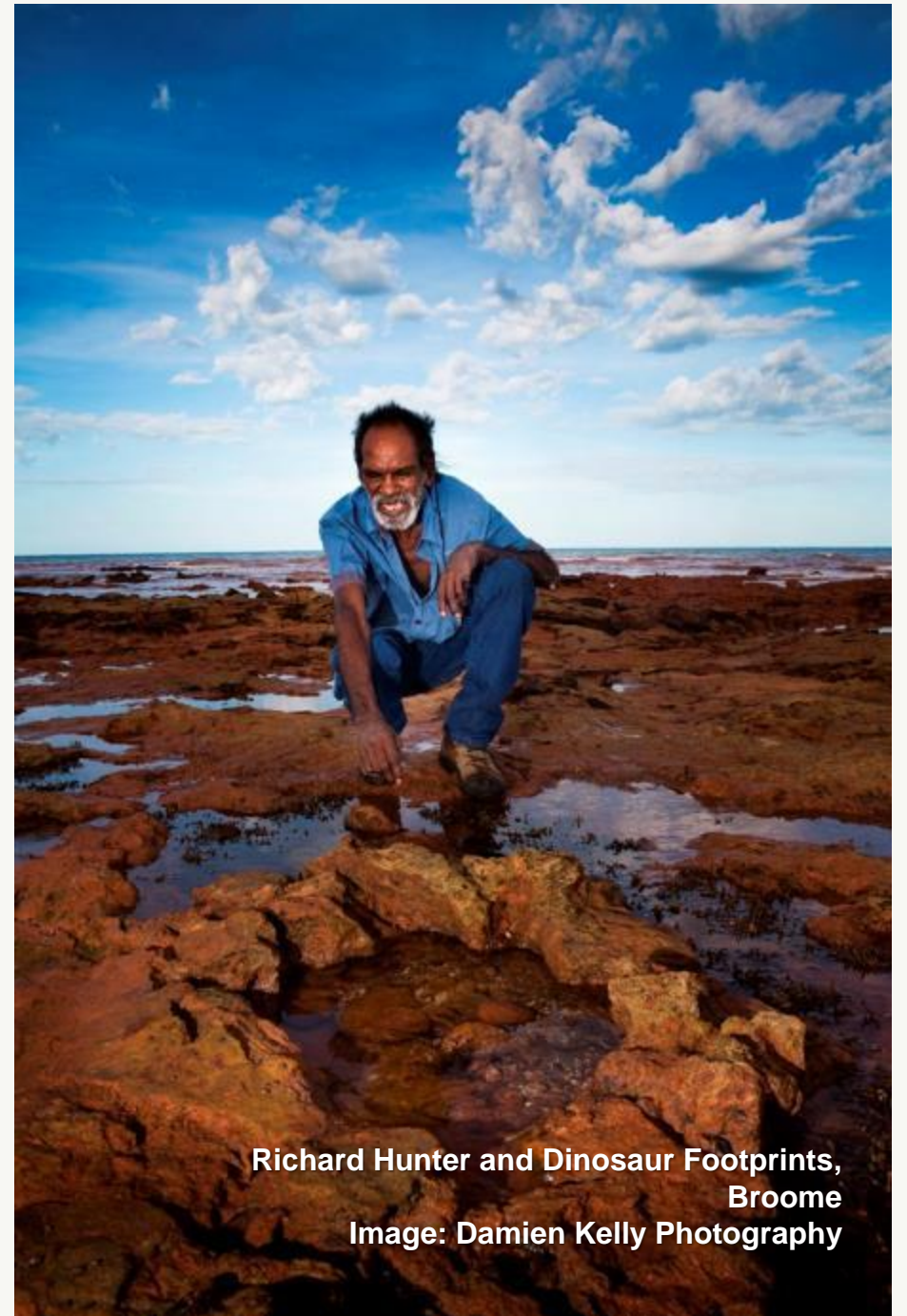
What can we support?

- Grants that result in public benefit for the WA community
- A clear link to the outcomes that the grant will achieve, which in turn link to the Community Investment Framework



What we don't support

- Projects taking place outside Western Australia
- Retrospective, contingency or on-going operational costs
- Religious activities (although welfare and community service activities of faith-based groups can be funded)
- Competitive sporting activities
- Medical research
- The GST component of items purchased by the grant
- Projects or initiatives that could/should be funded by other Government funding arrangements



Richard Hunter and Dinosaur Footprints,
Broome
Image: Damien Kelly Photography

Grant limits

- The minimum grant request is \$3,000
- \$15,000 limit for organisations not registered for GST or unincorporated groups (unless auspiced)
- Otherwise, there is no upper grant limit
- Lotterywest is a complementary grant-maker. We expect others will contribute appropriately to the cost of initiatives (financially and/or in kind)



How we work

Community development approach

- We encourage you to talk to us before applying
- We are a developmental grant maker and can help bring your idea to reality
- We can help you to link with other relevant partners where applicable
- We are based in Subiaco but will also come to you – face to face is our preferred but we will work flexibly

Understanding our Community Investment Framework

We support grants that contribute
towards achieving our priority
areas



Telethon Kids Institute
Perth Children's Hospital

What is it?

- Our vision is to build a better and healthier WA, together with our communities
- The [Community Investment Framework](#) is our road map developed to support our vision
- We aim to fund across five priority areas:
 - Inclusive thriving community
 - Connected cultural experiences
 - Protected sustainable ecosystems
 - Smart innovative society
 - Active healthy people
- We look to support grants that contribute towards achieving these priorities in WA

Community Investment Framework

Priority areas



Inclusive thriving community

Supporting the diversity of Western Australians to actively engage in community life.



Connected cultural experiences

Bringing people together through the arts, heritage and cultural activities.



Protected sustainable ecosystems

Supporting our community to sustain and enhance our unique species and environments.



Smart innovative society

Optimising our community's talent and capability.



Active healthy people

Assisting our community to be more active and support initiatives which promote healthy lives.

Outcomes

- More people have a stronger sense of belonging in their community
- Vulnerability and disadvantage is reduced across our community
- Raised community connection and participation

- Our community is connected through arts and cultural activities
- Indigenous heritage and culture is respected, acknowledged and embraced
- Western Australia's cultural heritage is shared and preserved

- Our community is connected with, and cares for, our natural heritage
- Ecosystems and endangered species are protected and restored
- Our community's impact on the environment and animals is reduced

- Western Australia is a leader in new thinking and innovation
- Knowledge and capability are shared for the benefit of our community
- Talent is attracted to and retained in Western Australia

- More Western Australians live healthy lifestyles
- More Western Australians are mentally healthy

This priority is delivered in partnership with Healthway

The priorities are progressed through three grant programs

1. Grassroots and community-led
2. Developing solutions
3. Community legacy grants



Whale Playground, Scarborough 2018

Image: The Scene Team

Start preparing your application

Applications open 1 July



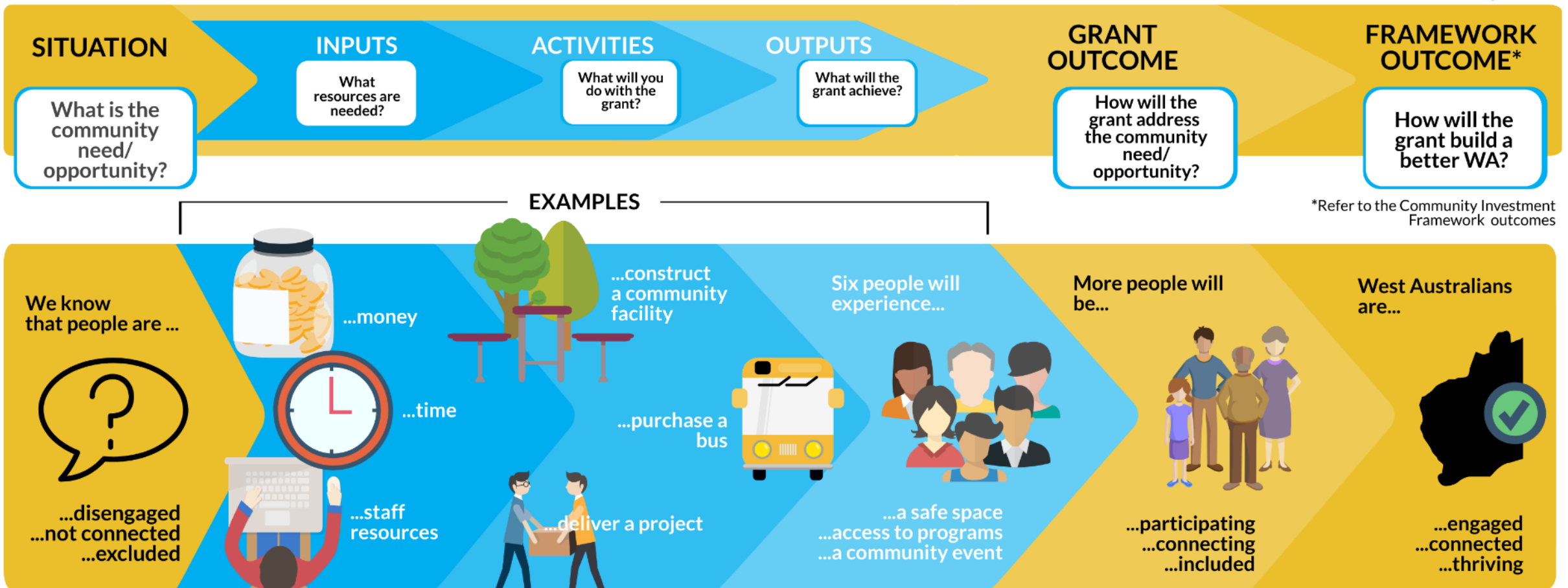
Leeuwin Ocean Adventures, 2016

Image: Leeuwin Ocean Adventures



Start preparing your application

Our application questions are informed by a 'Logic Model'. This describes what a project will do, how it will do it and what it will achieve.



What we look for

- Connection to our Community Investment Framework
- A strong evidenced based proposal responding to broad identified need/opportunity
- High usage and broad impact
- Appropriate and realistic budget, value for money
- Who are you working with?



Getting your documents together

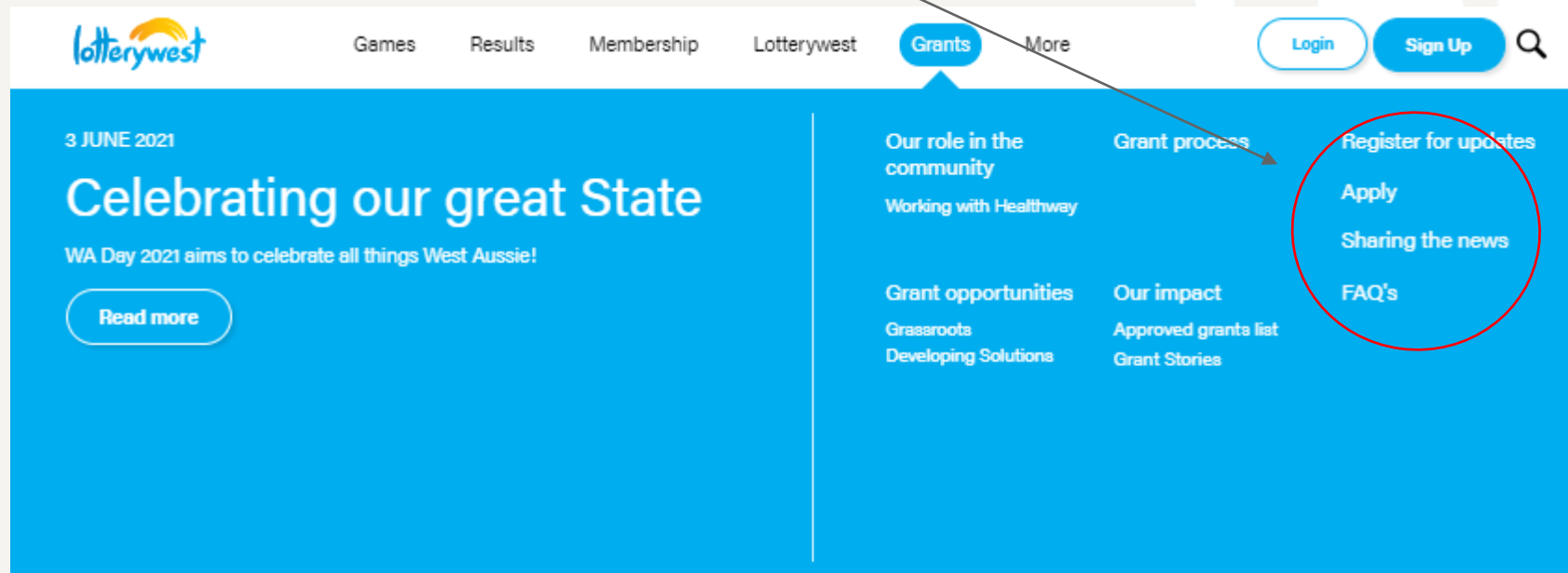
Applications can be submitted through our online Portal from July. But you can start preparing your application now.

Things we will need from you

- Your organisation's rules or constituent documents
- Budget and quotes
- Annual report and AGM minutes
- Bank statement
- Financial Statements
- Any other supporting documents such as project/building plans
- Referee details, and letters of support
- Conditions of Grant

Applying

- Information on our website
- Register and apply through our Grants Portal
- Check what supporting documentation we need
- Call or email us at anytime



Welcome to the Lotterywest Grants Portal

Please check our website prior to applying to find out [who and what we can support](#) and [what is needed](#) for your application.

[Give us a call](#) to talk to us about your idea.

Login

Already registered?

Business Partner Number *

[Forgot BPN?](#)

Login

Register

First time here?

ABN

☐ I don't have an ABN

Next

[Need help?](#)

Grant making process



You should submit your application at least 4 months before you need to know the outcome
Please contact us ASAP if this is going to be a challenge.

Get inspired!

Here's just a few of the great grants we've been proud to support.



Tracksuit performers, Fremantle Old Boys School 2017

Grant examples

Cockburn Community Men's Shed	\$14,998	New equipment and a safe outdoor place for activities to meet with increased demand for participation.
Denmark Men's Shed	\$360,000	Construction of a men's shed in Denmark to reduce social isolation, support health and well-being and provide a community meeting space.
Harrisdale Men's Shed	\$13,800	Kitchen relocation to improve the facilities of the Harrisdale Men's Shed and make space for new members and wellbeing activities.

More grant examples ...

Margaret River Men's Shed

\$380,000

Construction and fit-out of a Men's shed in Margaret River to reduce social isolation, support health and well-being and provide a community meeting space.

Men's Sheds of WA

\$533,200

Staff and project costs, a small grants program and subsidised travel and accommodation for the 2021 state conference to increase participation in Sheds.

Warmun Community (Turkey Creek)

\$76,087

Equipment, furniture and fencing requirements for the recently refurbished and upgraded Men's Shed in Warmun.

Sharing the News



Any questions?



West Australian Opera and Perth Festival season of
Bran Nue Dae, and Opera Conference production.

Image: Prudence Upton

Connect with us!

Visit: lotterywest.wa.gov.au

If you need help, please contact us:

Phone: 133 777

Email: grants@lotterywest.wa.gov.au

Connect with us:    



Coogee Live, 2018
Image: Johannes Reinhart