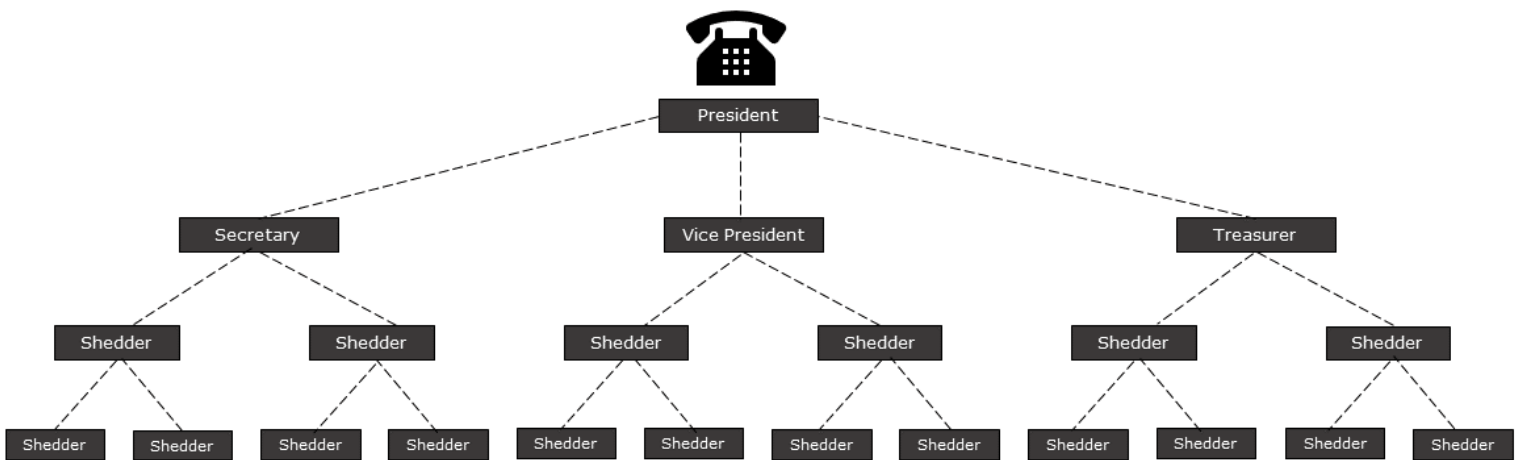


Keep in touch with your community

How to establish a buddy system or phone tree in your Shed

Buddy Systems are formal arrangements where a community or group is divided into smaller groups of 'buddies'. Each person is assigned the responsibility of contacting & 'looking out for' fellow group members.

Phone Trees are a tool that can help everyone during a crisis. They are a useful method to help 'buddies' to make sure that everyone stays informed and connected in their group.



HOW

1. Decide on a person/small group who will coordinate the effort.
2. Get everyone's contact details / check everyone is happy to be involved.
3. Draw out the order/ of the phone tree & participants.
4. Distribute the phone tree to the group & explain why it is being used.
5. Test run the phone tree/ set a communication schedule e.g., weekly contact.

WHY

- We can look out for each other.
- We are all clear on our responsibilities.
- We can strengthen and create new friendships in our group/ community.
- Easy to set up and run.
- When help is needed, no one gets left behind.

